

Swiss TPH



Swiss Tropical and Public Health Institute  
Schweizerisches Tropen- und Public Health-Institut  
Institut Tropical et de Santé Publique Suisse

Swiss Centre for International Health

Systems Performance and Monitoring Unit

**Geneva Health Forum 2010**

Strengthening family medicine  
networks in Eastern Europe

Challenges in Tajikistan and elsewhere

Kaspar Wyss, Geneva, 19 April 2010

# Structure

- What do we understand by a family medicine network?
- Challenges related to family medicine strengthening in Tajikistan and elsewhere

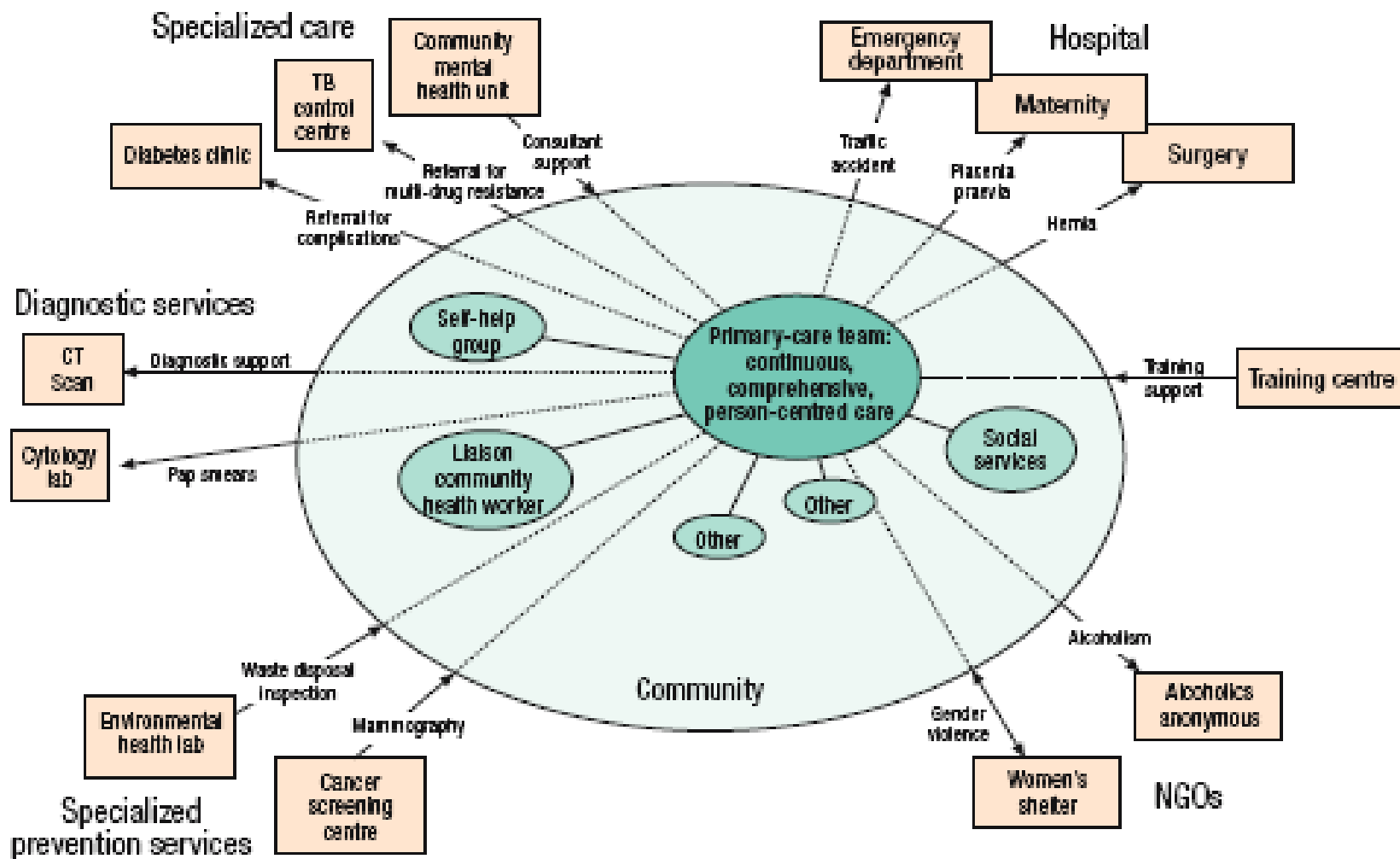


Source: Mc Coy et al, 2009

*The World Health Report 2008*

## *Primary Health Care*





Source: WHR 2008



**Table 3.1** Aspects of care that distinguish conventional health care from people-centred primary care

<b>Conventional ambulatory medical care in clinics or outpatient departments</b>	<b>Disease control programmes</b>	<b>People-centred primary care</b>
Focus on illness and cure	Focus on priority diseases	Focus on health needs
Relationship limited to the moment of consultation	Relationship limited to programme implementation	Enduring personal relationship
Episodic curative care	Programme-defined disease control interventions	Comprehensive, continuous and person-centred care
Responsibility limited to effective and safe advice to the patient at the moment of consultation	Responsibility for disease-control targets among the target population	Responsibility for the health of all in the community along the life cycle; responsibility for tackling determinants of ill-health
Users are consumers of the care they purchase	Population groups are targets of disease-control interventions	People are partners in managing their own health and that of their community

## What do we understand by family medicine network (1)

- Relation of the family medicine network to the broader health system
  - Are roles of family medicine services clearly outlined? What is the link to the community? What are the linkages to polyclinics? Are referrals and back-referrals well structured?
  - What are the management (including M&E) functions and where they are located?
  - Are services to be offered by family medicine defined? What competencies and what team do we expect at family medicine level?
  - How do vertical programs interact with family medicine services?



## Challenges related to family medicine strengthening in Tajikistan and elsewhere

- Many of the issues relating to family medicine strengthening can also be found in Western Europe





## Anzahl der Allgemeinpraktiker und Fachärzte in privater Praxis pro 1000 Einwohner (1990-2006)

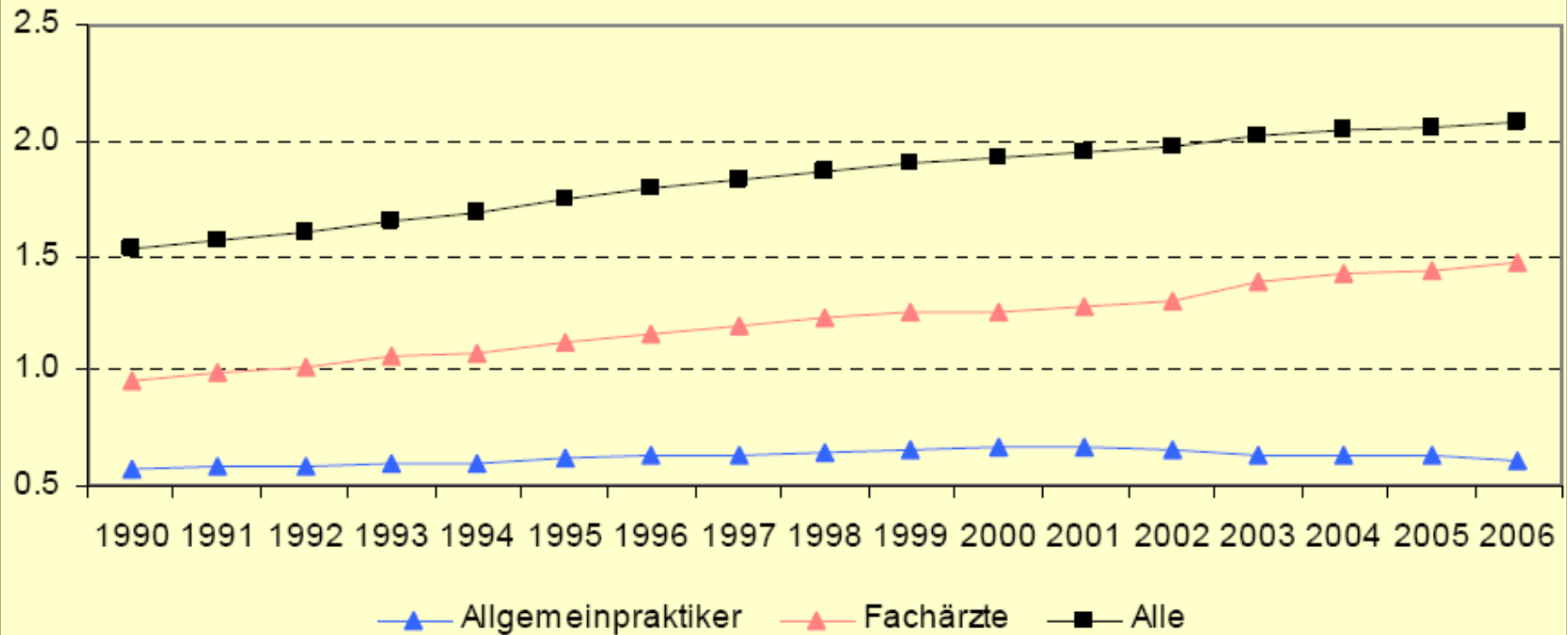


Abb. 1 (5.1.1) FMH-Statistik | Obsan 2007

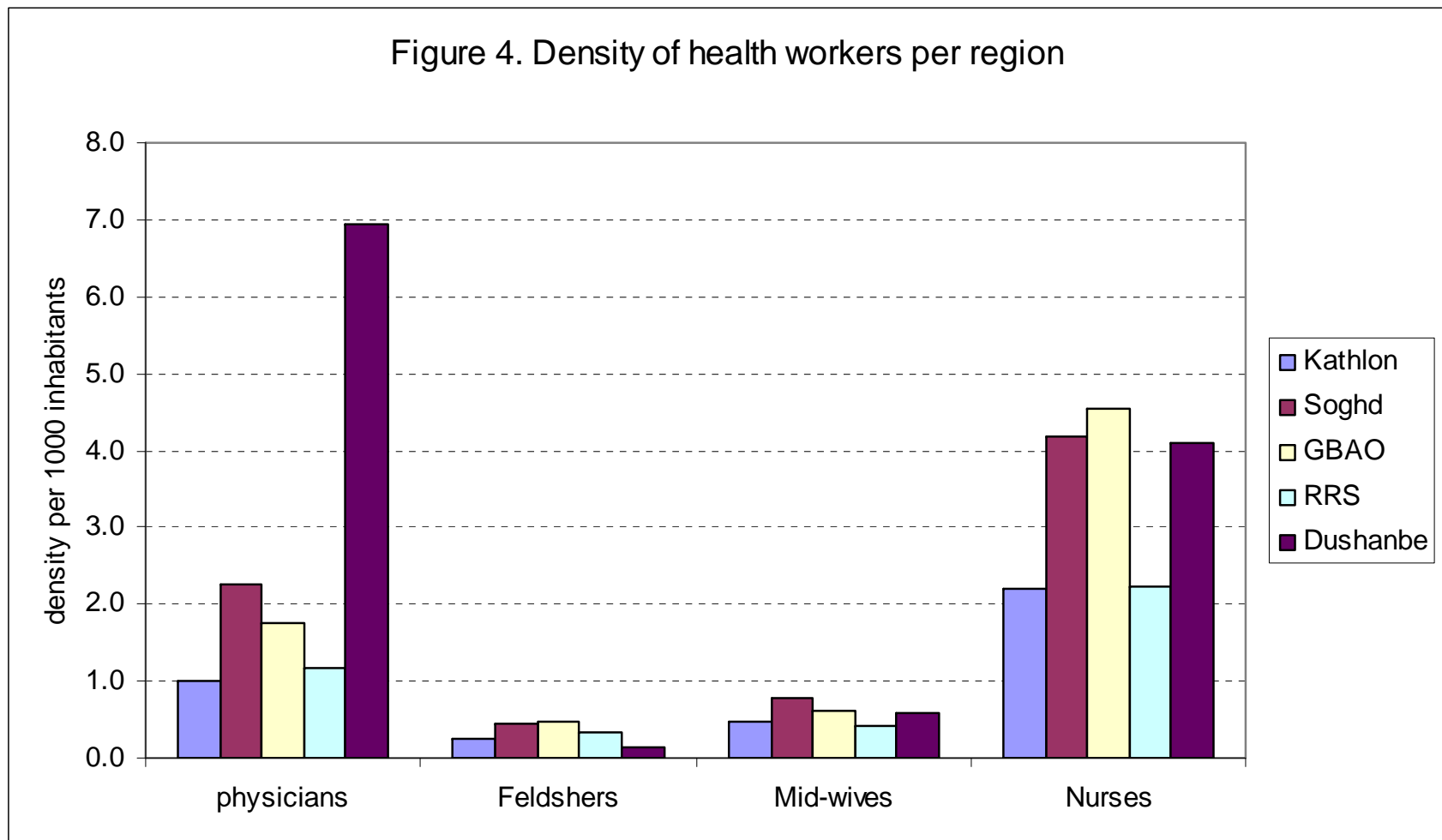


## Challenges related to family medicine strengthening in Tajikistan and elsewhere

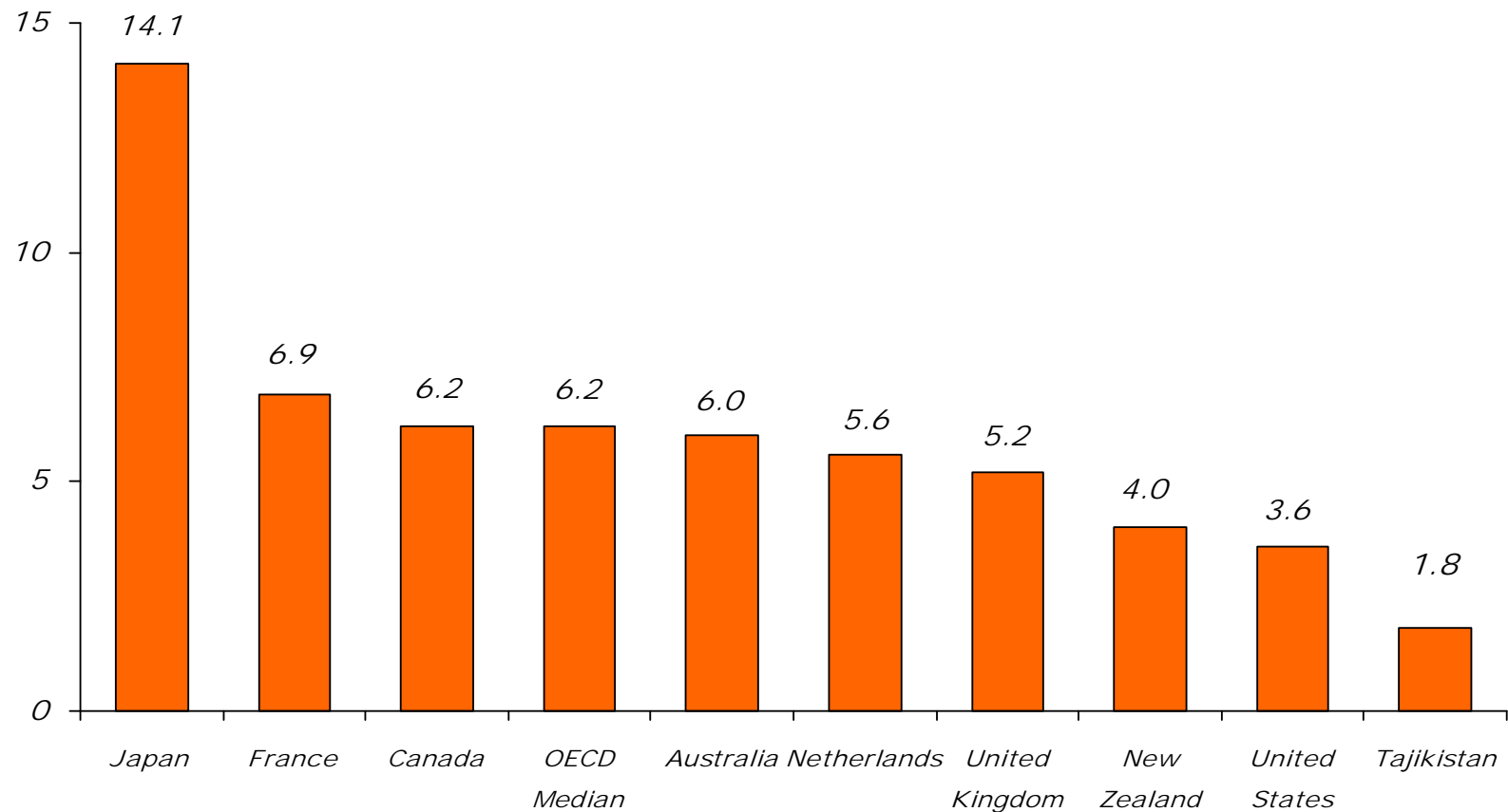
- Community involvement and local decision-making
- Management, planning of administration of family medicine services are organised
- Services to be offered at family medicine services
  - Place and role of vertically organised services provision (TB, MCH, etc)
- Financing of family medicine services
  - How to increase resources devoted to family medicine?
- Human resources for delivering family medicine services
  - Professional status of family medicine
  - Team composition
- Quality of care
  - Undergraduate, graduate and post-graduate training
  - Continuous medical education



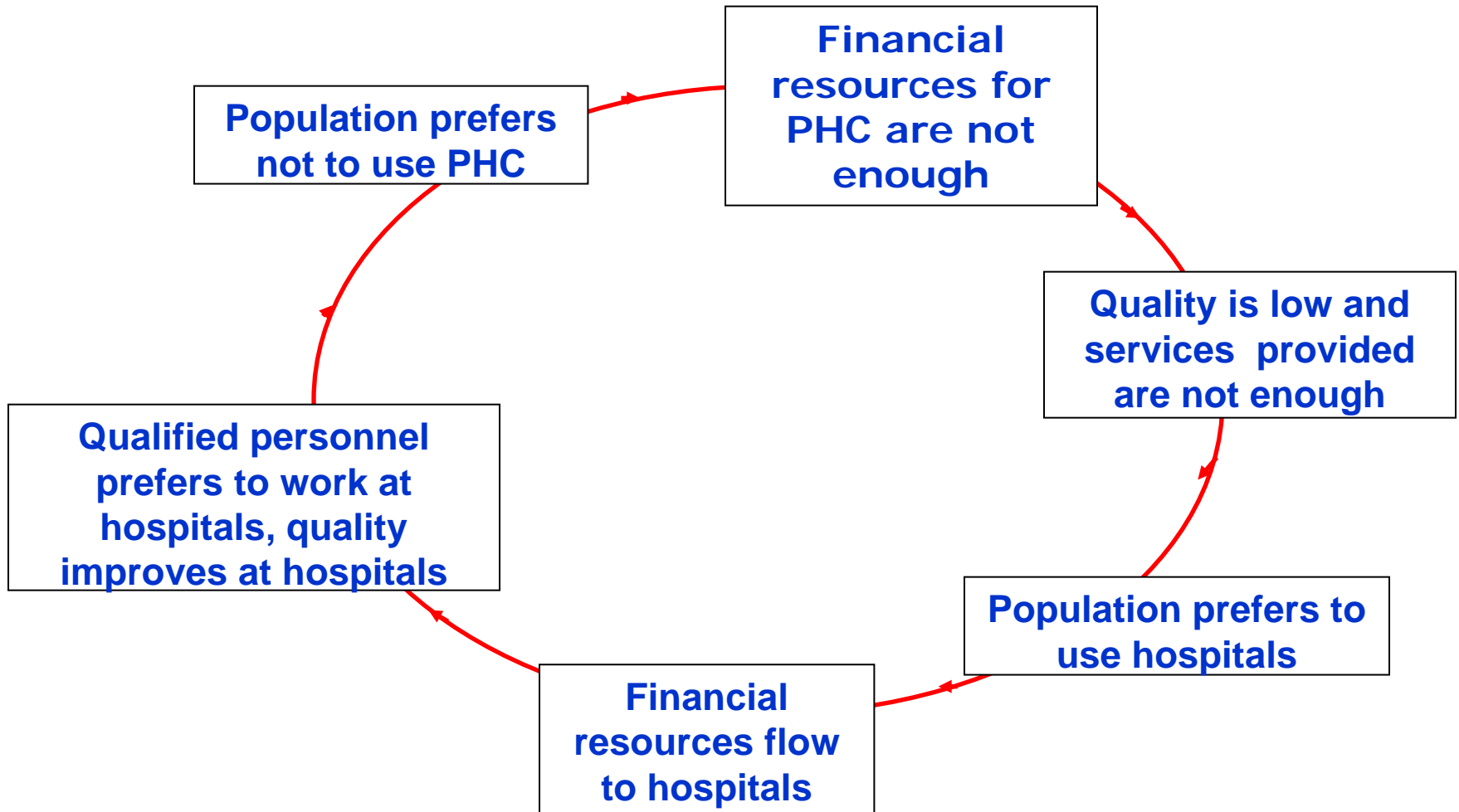
# Distribution of health workers in Tajikistan

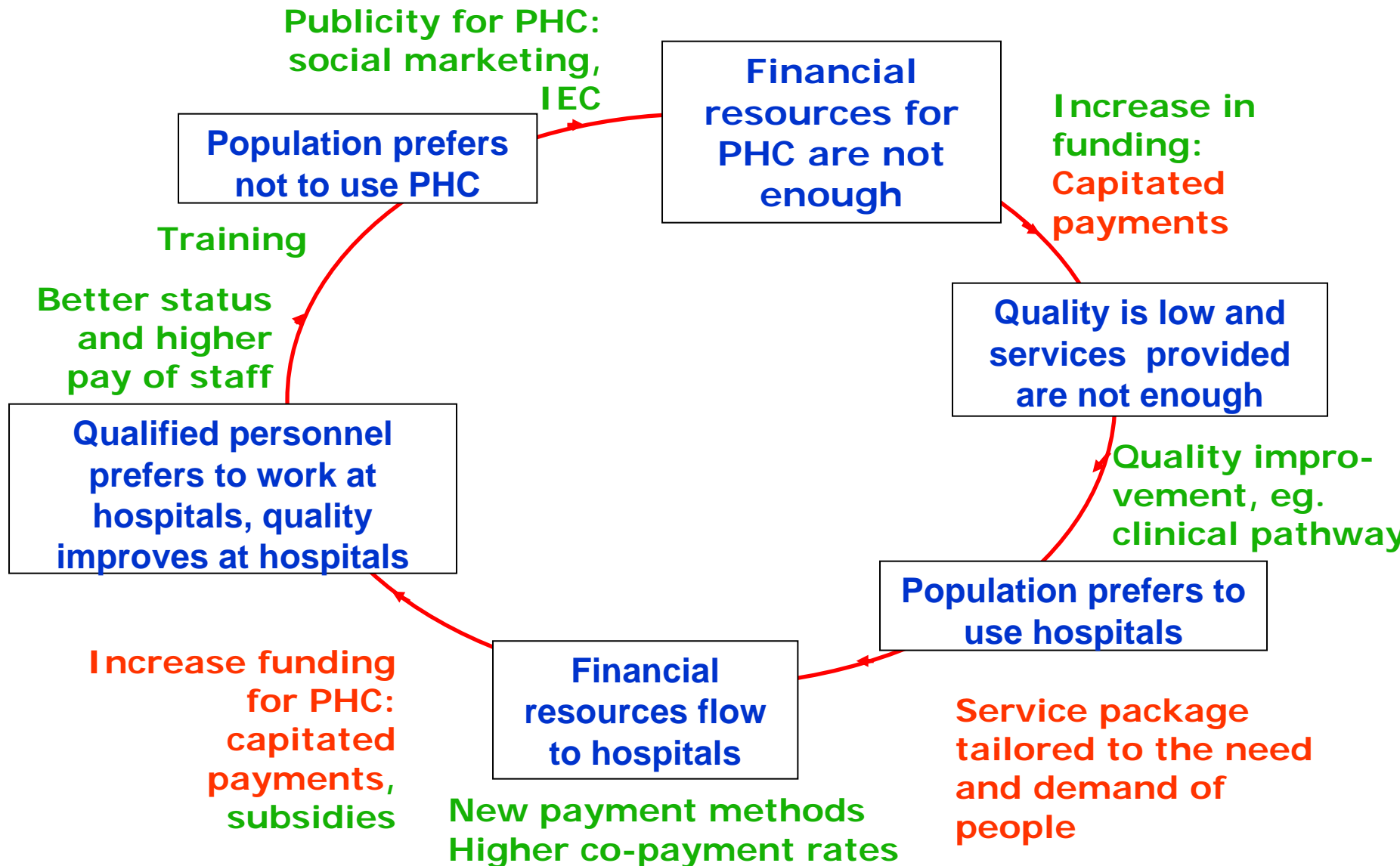


## Number of annual contacts per capita contacts with a doctor



Source: OECD Health Data 2008





## Conclusions

- Family medicine (as health systems) strengthening takes time
- Lobbying and political commitment are crucial
- Approach to strengthening family medicine networks have to work as far as possible simultaneously on different levels
  - Marketing and advocating
  - Working conditions of family medicine staff
  - Community involvement/participation
  - Financing and resource allocation
  - Management, planning and monitoring
  - Capacity of health staff and quality of care improvements
  - etc

